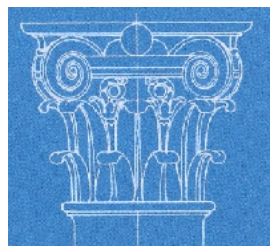


CHURCH OF ST. ANDREW CHEDWORTH



CONSERVATION NOTES ON ELEVEN LISTED CHURCHYARD MEMORIALS



Work Completed following Report October 2020
Conservation Notes and Findings August 2022

CENTRELINE ARCHITECTURAL SCULPTURE
FAIRFAX HOUSE, VICARAGE STREET, PAINSWICK, GL6 6XS

Monument 1 DESCRIPTION

Legacy Number and Grade Legacy System Number: 131077
List Entry No. 1152140 (a) Grade II

Name and Date Unidentified, probably early C18th

Location 3m East of porch

General Description Chest tomb with lyre ends on a large cyma recta moulded plinth. S side has rectangular (illegible) inscription panel flanked on LH side by a winged figure generally believed to represent Father Time holding a scythe and standing on a wheel representing the Circle of Life and on RH side a skeleton representing Death with a shroud. E lyre end has a coat of arms shield with a crenellated tower visible, N side has (unused) inscription panel below an elaborate swag flanked by figures holding open books and the E lyre end has a winged cherub holding an large open Bible.

PROPOSALS Repoint crack in top as cement is loose and will be allowing water to penetrate the tomb. Remove the remains of the stubs of the iron cramps in the top as they might cause further cracking. Fill the larger holes in the top which are now collecting water with lime mortar,.

CONSERVATION WORK

Crack in top repointed with lime.

The top was found to have non-ferrous cramps across the crack, set in cement. The top layer of cement was cut out and pointed with lime.

The larger holes in the top pointed with lime mortar,.

MONUMENT 2 DESCRIPTION

Legacy Number and Grade

Legacy System Number: 131077
List Entry No. 1152140 (b) Grade II

Name and Date

Joseph Peachy d. 1737, Richard Robins d. 1806,
Robert Robins d. 1779 and Mary his wife d.1799

Location

3.75 m East of porch

General Description

Chest tomb with deep cyma recta moulded top, originally constructed in two parts cramped together. N and S sides have fielded inscription plaques and E and W ends have sunken inscription plaques with moulded margins.

PROPOSALS

Clean out and repoint all joints with lime mortar. On N inscription panel fill crack at W end with lime mortar and mortar repair the friable area at top of E end of this panel.

CONSERVATION WORK

All joints cleaned out and repointed with lime mortar.

On N inscription panel crack at W end filled with lime mortar and also mortar repaired the friable area at top of E end of this panel.

Monument 3 DESCRIPTION

Legacy Number and Grade

Legacy System Number: 131077
List entry Number 1152140 (c)

Name and Date

John Radway Late C18th

Location

4m E of porch

General Description

Chest tomb set over its own vault, limestone with fluted pilasters flanking the main double inscription panels on the north and south sides. Deep elaborate top with cyma recta and cyma reversa mouldings. Large stone laid flat to E end probably covers the steps down to the vault.

PROPOSALS

First consider obtaining an engineer's report as a ring beam around the wall head may be necessary to stabilise the walls to take the weight of the monument. Completely dismantle the monument to repair and stabilise the top of the vault walls. Rebuild the monument replacing the rusting iron cramps with stainless steel bar set in lead. Point all joints with lime mortar. As the vault will be exposed there might be a need to involve an archaeologist.

CONSERVATION WORK

(Structural Engineer's Report attached at end of Report.)

Monument completely dismantled and the vault was found to be filled with soil.

Tops of vault walls repaired, the east end of the vault was missing which supports the theory in the Report that there were steps down to the vault from the east.

Ring beam inserted on which Supreme Prestressed Textured concrete lintels were laid to support the monument.

Monument rebuilt replacing the rusting iron cramps with stainless steel bar set in lead. All joints pointed with lime mortar.

Extra: South west part of plinth was missing and was made up with rubble left over from the vault wall rebuilding.



Void beneath the tomb



Ring beam in place ready for the lintels



Concrete lintels set on the ring beam



Starting to rebuild the plinth

Monument 4 DESCRIPTION

Legacy Number and Grade

Legacy System Number: 131077
List Entry No. 1152140 (d) Grade II

Name and Date

Francis Radway and Mary Radway, late C18th

Location

4m E of porch

General Description

Chest tomb with elaborately moulded top and deep base similar to (c) in style. Double inscription panels like (c) to the S and N with Roman inspired fasces symbol separating the two inscriptions on S and N with pilasters decorated with...to S and fluted pilasters to N. Oval end panels to E and W. W oval panel was lettered but is now illegible.

PROPOSALS

Repoint all open and cracked joints in lime mortar and using NHL2 hydraulic lime grout the delaminating areas and mortar fill the cracks.

CONSERVATION WORK

Repointed all open and cracked joints in lime mortar and using NHL2 hydraulic lime.

Grouted the delaminating areas and mortar filled the cracks.

Monument 5 DESCRIPTION

Legacy Number and Grade Legacy System Number: 131078
List Entry No. 1340885 (a) Grade II

Name and Date John Tufley, probably mid C18th

Location 10m S of porch

General Description Chest tomb, limestone with inscription panel on N side with fielded inscription panels on ends W and E and a plain built ashlar on S. Top made from three reused stones, the two bigger stones were carved in the early C18th and turned with carved faces down and their carved decoration roughly hacked off to flatten. The top stones were originally cramped together with a long iron cramp which may have been hidden by another capping stone now lost, a long channel remains where the cramp was fitted.

PROPOSALS Lift top stones and dismantle W end panel, pin across the cracks with stainless steel dowel to reassemble and then replace. Remove the core material visible through top corner of N panel and rebuild in coursed rubble, the cramp the repaired W end to strengthen structure and repoint whole monument. Rebed top stones, the edges of the face-down carving will still be visible underneath the edge.

CONSERVATION WORK

Top stones lifted and W end panel dismantled.

Cracks pinned with stainless steel dowels and reassembled.

Core material visible through top corner of N panel removed and rebuilt in coursed rubble.

Stainless steel cramp added to W end to strengthen structure

Whole monument repointed with lime mortar.

Top stones rebedded, the edges of the face-down carving are still be visible underneath the edge.

Monument 6 DESCRIPTION

Legacy Number and Grade

Legacy System Number: 131078
List Entry no: 1340885 (c) Grade II

Name and Date

William Joachim d.1841; Ann his wife d.1867;
Thomas Joachim d.1878

Location

6m SW of porch

General Description

Chest tomb, limestone, with lyre ends with deep single slab top with generously overhanging cyma recta moulded edge. Oval cartouche at E end surmounted by a head of a winged angel. Main rectangular inscription panel is flanked by drapery above skulls.

PROPOSALS

joints with suitable lime mortar.

Mortar fill spall in W lyre end and repoint any open or cracked

CONSERVATION WORK

Mortar filled spall in W lyre end and repointed open and cracked joints with lime mortar.



Mortar filling the spall in W lyre end

Monument 7 DESCRIPTION

Legacy Number and Grade

Legacy System Number: 131076
List Entry No. 1090248 Grade II

Name and Date

The six children of Theyer & Elizabeth Townsend from 1835

Location

16m SE of porch

General Description

Tall pedestal tomb in limestone with a moulded pyramidal top, most probably over a vault as the monument is partly overlapping a large rectangular Forest of Dean stone to the E, set horizontally in the ground which probably covers the steps down to the vault. This monument predates the parents' 1887 gothic style monument close by to the east.

PROPOSALS

Repoint all joints with lime mortar and point the crack in N panel. Lightly brush area of active stone decay on N panel and mortar repair. Pin the ovolo indent back onto top moulding.

CONSERVATION WORK

All joints repointed with lime mortar.

Crack in N panel also repointed.

Areas of active stone decay on N panel lightly brushed and mortar repaired.

Loose ovolo indent stone pinned back onto top moulding.

Monument 8 DESCRIPTION

Legacy Number and Grade

Legacy System Number: 131075
List Entry No. 1152100 (a) Grade II

Name and Date

Charles Turk of Coln St. Dennis d.1834,
Elizabeth Turk his daughter d. 1803

Location

10m E of chancel

General Description

Large limestone chest tomb with an elaborate gadrooned cap, blocking course and cornice. Fielded panels N and S with fan decorated quadrants in the corners. Elegantly inscribed panels to E and S. Moulded plinth and base standing on rubble plinth below.

PROPOSALS

Dismantle whole of top to the cornice level, remove original iron cramps which are probably rusting and failing and replacing with stainless steel cramps set in lead. Repoint all joints with lime mortar. Point and pack the loose rubble base of the tomb with lime mortar.

CONSERVATION WORK

Top dismantled to the cornice level to remove original iron cramps.

Cramps replaced with stainless steel cramps set in lead.

All joints repointed with lime mortar.

Base of the tomb repointed and spaces packed between the rubble with lime mortar.

Monument 9 DESCRIPTION

Legacy Number and Grade

Legacy System Number: 131075
List Entry No. 1152100 (b) Grade II

Name and Date

Mary, Wife of Thomas Court d. 1782 and Thomas Court d. 1808

Location

10m E of chancel E end

General Description

Cast iron ledger tomb with raised lettering, slightly curved. Thomas Court was resident at Glover's Cottage, Chedworth in 1841.

PROPOSALS

N/A

CONSERVATION WORK

None required at this time

Monument 10 DESCRIPTION

Legacy Number and Grade

Legacy System Number: 131074
List Entry No. 1340884 (a) Grade II

Name and Date

Joseph Sty d. 1792 and Mary his widow d.1826

Location

11m S of SE corner of chancel

General Description

Pedestal tomb with fluted corner pilasters set diagonally, raised inscription panels on all sides with deep fluted frieze with rosettes on the corners. Deep top with two blocking courses and moulded cap with roll detail.

PROPOSALS

Dismantle the monument to plinth level and install a new Limecrete base and rebuild the monument using stainless steel cramps set in lead at the top corners and point all the joints with lime mortar.

CONSERVATION WORK

Monument dismantled to plinth level. It was found that part of the underground base was made up using a broken headstone. The part that would have been below ground has the date 1697 carved on it but it is uncertain whether the headstone was ever used or whether the 18thC masons were simply using an abandoned commission.

Limecrete base installed and 17thC headstone laid back face down in original orientation and position which is under the E half of the monument.

Monument rebuilt using stainless steel cramps set in lead at the top corners.

All the joints pointed with lime mortar.



Uncovered 17thC headstone



Area dug for Limecrete foundation

Monument 11 DESCRIPTION

Legacy Number and Grade	Legacy System Number: 131074 List Entry No. 1340884 (b) Grade II
Name and Date	Sarah Sty, wife of Robert Sty d. 1743 and her daughter Sarah.
Location	9m S of SE corner of chancel
General Description	Chest tomb, limestone, with large overhanging moulded top. All four sides have elaborate Rococo style cartouches with carved cherub heads, winged cherubs, clouds, flowers, leaves etc. with the main inscription panels N and S flanked by marginal panels with draped decoration symbolising the veil between life and death, set over skulls on the N side.

PROPOSALS Pick out open joints and repoint with lime mortar, use herbicide to curb ivy growth. Replace any loose cement repairs with lime mortar.

CONSERVATION WORK

Open joints cleaned out and repointed with lime mortar.,

Herbicide used to curb ivy growth.

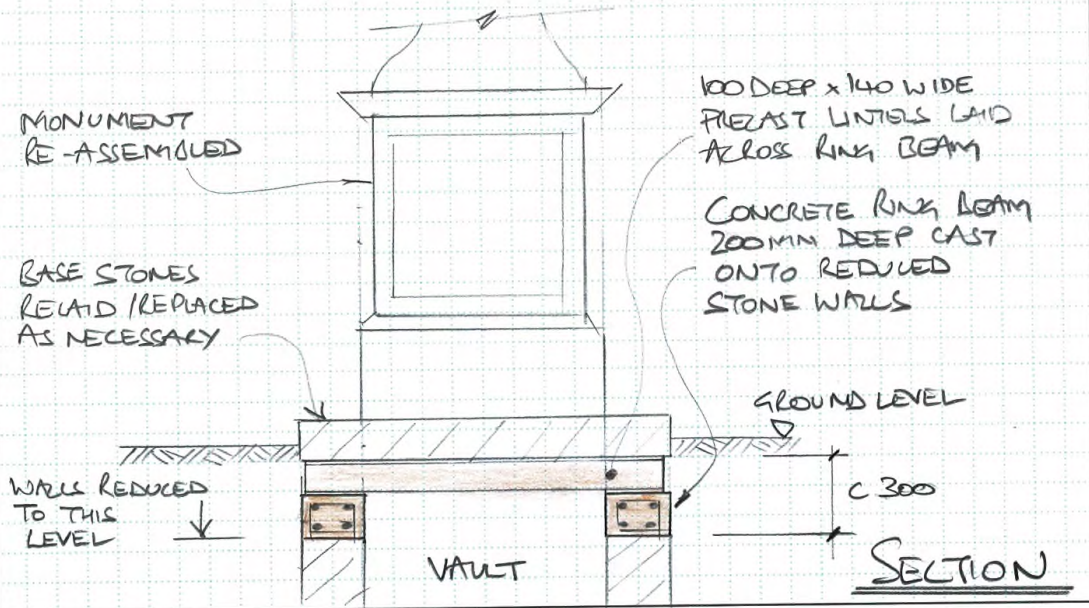
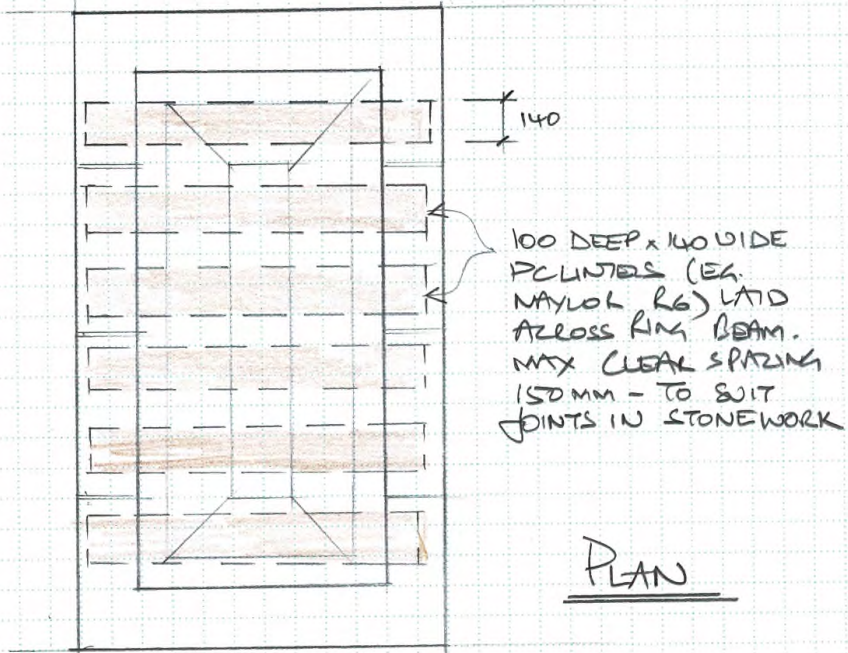
Loose cement repairs picked out and replaced with lime mortar.



JOB NO 800		REV
SHEET NO C/01		CHD
DRG REF	MADE BY JL	CHD

PROJECT CHEDWORTH CHURCH	LOCATION RADWAY MONUMENT	DATE 2/21
-----------------------------	-----------------------------	--------------

REPAIRS TO RADWAY MONUMENT



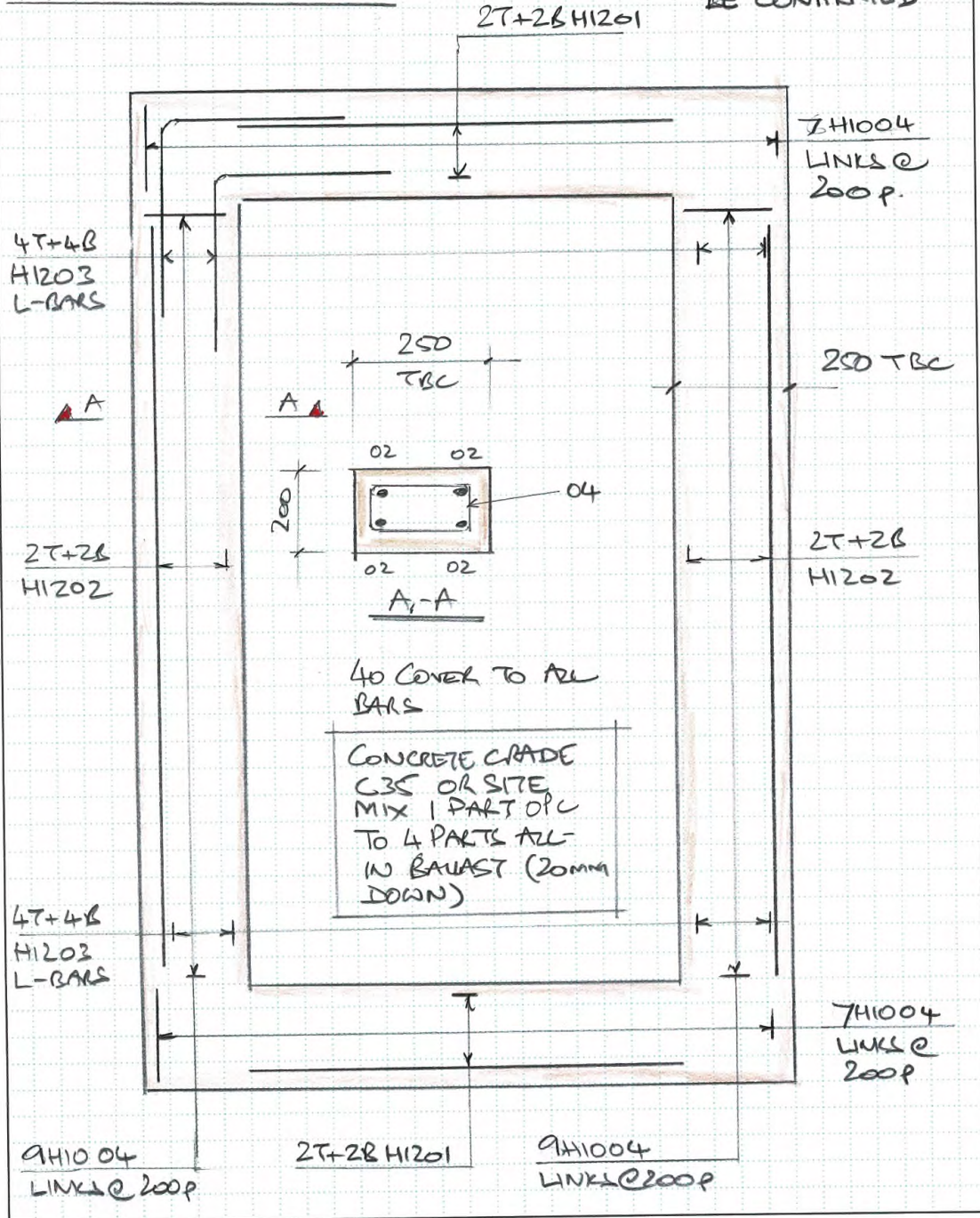


JOB NO E00		
SHEET NO C102	REV	
DRG REF	MADE BY JB	CHD

PROJECT CHEDWORTH CHURCH	LOCATION RADWAY MONUMENT	DATE 3/21
-----------------------------	-----------------------------	--------------

RING BEAM DETAILS

DIMENSIONS TO
 BE CONFIRMED



HEAD OFFICE BTA Structural Design Ltd,
Street Farmhouse,
Shipton Moyne, Tetbury GL8 8PN
T 01666 880532
E post@bta.co.uk



STRUCTURAL
DESIGN
WWW.BTA.CO.UK

LONDON OFFICE T 020 89950567

JOB NO 800		
SHEET NO C103		REV
DRG REF	MADE BY JRS	CHD
DATE 3/21		

PROJECT CHEDWORTH CHURCH	LOCATION RADWAY MONUMENT
-----------------------------	-----------------------------

BAR SCHEDULE

BAR MARK	SIZE	N ^o	LENGTH	S/C	A	B
01	H12	8	800	00		
02	H12	8	1700	00		
03	H12	16	1600	11	800	
04	H10	32	750	51	170	120